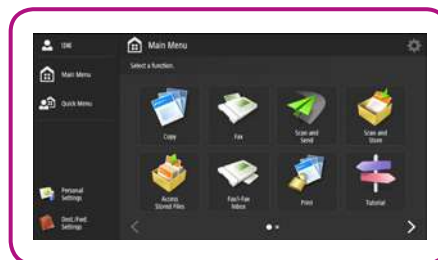


# imageRUNNER ADVANCE C3520i, C3525i, C3530i



## Compact Colour A3 multifunctional with powerful end-to-end document capabilities.

The imageRUNNER ADVANCE C3500 series is small in size but big in its ambition to solve your challenges around managing your documents. It is the perfect addition to support and optimise any busy working groups day-to-day workflows.



### Control costs:

- Technology designed to reduce total cost of print
- User activity tracking provides visibility of print behaviour
- Apply policies and restrict usage at function level by user
- Save on transmission costs by utilising the Fax over IP option
- Tight integration with output management solutions such as uniFLOW
- Remote diagnostics and assistance, help reduce costs by minimising downtime and time spent by IT resolving issues
- Remote and centralised fleet management simplifies IT management of devices and fleets

### Support for Mobile Working:

- Connect to cloud storage to access documents online
- Secure mobile printing as standard
- Support for industry standards such as Apple Airprint® and Mopria®
- Enable guest printing with Direct Connection
- Supports a range of connection types with your smart device e.g. Optional Bluetooth
- Substitute your PC for your smart device to complete your day-to-day workflows
- Send data from your smart device to the imageRUNNER ADVANCE C3500 series and vice versa

### Manage devices efficiently:

- Supports industry and network standards i.e. PCL and Adobe PostScript for seamless integration
- Shares resources (e.g. Fax) with other imageRUNNER ADVANCE devices on the network
- Collaborates with business applications and external systems in the cloud
- Canon's MEAP platform provides process optimisation, by integrating with a range of powerful document, capture and output management solutions
- Canon's device management tools give you a centralised point of control across your entire fleet, upgrade devices, check device status and consumables, turn off devices remotely, capture meter readings, as well as manage address books and printer drivers
- Designed to achieve maximum uptime with intuitive user maintenance videos and status notifications, to help keep supplies replenished
- Simplified fleet management by synchronising settings across multiple devices



PRINT



COPY



FAX  
Optional on  
all models



SCAN

### Streamline document workflows:

- Intuitive user interface with a large, responsive tilting colour touchscreen with smart phone-like usability
- Advanced personalisation enables a unique, personal experience tailored to meet each user's workflow needs.
- Effortless, rapid scanning captures paper-based documents with ease
- Scan and convert documents to Searchable PDF, Microsoft® Word, and Microsoft® PowerPoint files through a single-pass duplexing document feeder that holds up to 150 originals
- End-to-end document creation with a selection of finishing capabilities including convenient Staple-on-demand functionality
- Motion sensor technology wakes device from sleep mode when the user approaches
- Automatically remove blank pages when scanning

### Achieve stunning results:

- Robust design and engine, with up to 2,300 sheet paper capacity, perfect for handling workloads of busy workgroups.
- V<sup>2</sup> (Vivid & Vibrant) imaging technology ensures documents impress time after time and stand out from the rest

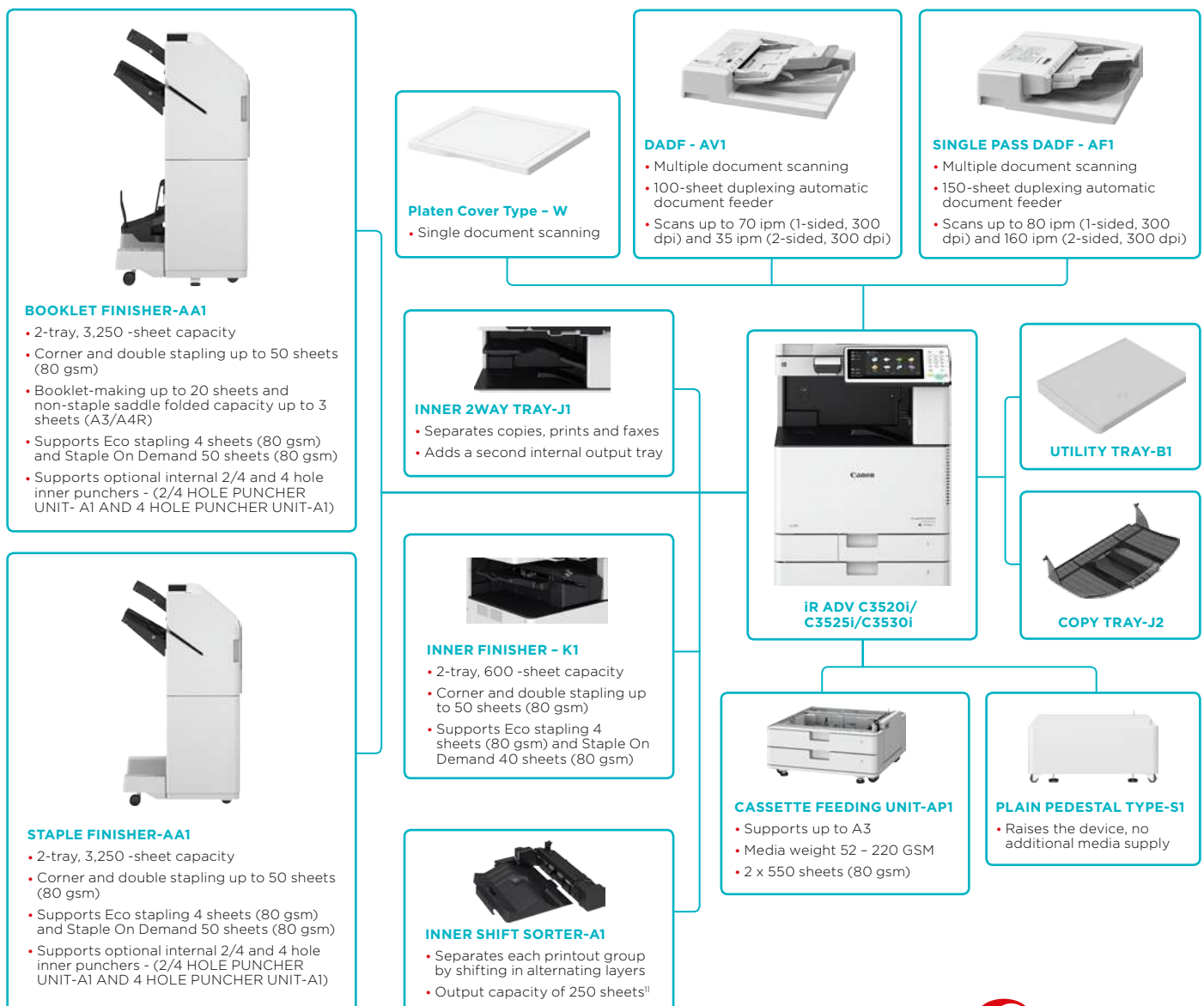
### Secure confidential information:

- Control who has access to the device with Award-winning, smart user authentication without impacting on user productivity or convenience
- Ability to disable functions by user to prevent unauthorised usage
- Secure Print and Mailbox enhance document confidentiality
- Ensure information privacy and security across your network with IPsec, port filtering capabilities, and SSL technology
- Prevent unauthorised distribution of sensitive information with an array of standard and optional document security features
- Industry-first Data Loss Prevention and auditing of prints, copies, scans and faxes through uniFLOW

### Environmentally responsible:

- Class leading Typical Electricity Consumption (TEC) ratings
- Consumes as little as 0.8W in sleep mode
- Incorporates sustainable design, with the use of recycled materials and bio-based plastic, and a focus on minimising environmental impact
- ENERGY STAR® qualified
- Qualifies for the stringent Blue Angel award
- Reduce waste with Staple-less Eco stapler
- Minimise waste with default 2-sided printing, secure printing, and the ability to hold print jobs, preview them and change print settings at the device, achieving the desired results at the first time of printing

### Main configuration options



# Technical Specifications

# imageRUNNER ADVANCE C3520i, C3525i, C3530i

## Main Unit

### Machine type

Colour Laser Multifunctional

### Core functions

Print, Copy, Scan, Send, Store and Optional Fax

### Processor Speed

Canon Dual Custom Processor (Shared) 1.75 Ghz

### Control Panel

25.6 cm (10.1 inch) TFT LCD WSVGA Colour Touch panel

### Memory Standard

Standard: 3.0GB RAM

### Hard Disk drive

Standard: 250GB Maximum: 1TB

### Interface Connection

NETWORK  
Standard: 1000Base-T/100Base-TX/10Base-T, Wireless LAN (IEEE 802.11 b/g/n)  
Optional: NFC, Bluetooth Low Energy

### OTHERS

Standard: USB 2.0 (Host) x1, USB 3.0 (Host) x1, USB 2.0 (Device) x1  
Optional: Serial Interface, Copy Control Interface

### Paper input (Standard)

2 x 550-sheet cassettes (80gsm)  
100-sheet multi-purpose tray (80gsm)

### Paper input (Option)

2x 550-sheet cassettes (80 gsm)  
(CASSETTE FEEDING UNIT-API)

### Maximum paper input capacity

2,300 sheets (80 gsm)

### Paper output capacity

Without Finisher: 250 sheets (A4, 80gsm)  
With Copy Tray: 100 sheets (A4, 80 gsm)  
With Inner Finisher: Max. 600 sheets (A4, 80 gsm)  
With External Finisher: Max. 3,250 sheets (A4, 80gsm)

### Finishing capabilities

Collate, Group  
With Inner Shift Sorter: Collate, Group, Offset  
With Inner Finisher: Collate, Group, Offset, Staple, Staple-Free  
Staple, Staple on Demand  
With External Finisher: Collate, Group, Offset, Staple, Booklet<sup>1</sup>, Hole Punch<sup>2</sup>, Staple-Free Staple, Staple on Demand

### Supported media types

Cassettes 1/2:  
Thin paper, Plain paper, Thick paper, Colour paper, Recycled paper, Pre-punched paper, Transparency, Bond paper, Envelope  
  
Multi-purpose tray:  
Thin paper, Plain paper, Thick paper, Colour paper, Recycled paper, Pre-punched paper, Transparency, Tracing paper, Label, Bond paper, Coated paper, Envelope

Cassettes 3/4 (CASSETTE FEEDING UNIT-API):  
Thin paper, Plain paper, Thick paper, colour paper, Recycled paper, Pre-punched paper, Transparency, Bond paper

### Supported media sizes

Cassette 1:  
Standard size: A4, B5, A5R  
Envelopes: No.10 (COM10), ISO-C5, DL  
Custom Size: 139.7 mm x 182 mm to 297 mm x 215.9 mm

Cassette 2:  
Standard size: A3, B4, A4, A4R, B5, A5R  
Envelopes: No.10 (COM10), Monarch, DL  
Custom Size: 139.7 mm x 182 mm to 304.8 mm x 457.2 mm

Multi-purpose tray:  
Standard size: A3, B4, A4, A4R, B5, B5R, A5, A5R, SRA3  
Custom size: 98.4 mm x 139.7 mm to 320 mm x 457.2 mm  
Free size: 98.4 mm x 139.7 mm to 320 mm x 457.2 mm  
Envelopes: No.10 (COM10), Monarch, ISO-C5, DL  
Envelope custom size: 98 mm x 98 mm to 320 mm x 457.2 mm

CASSETTE FEEDING UNIT-API:  
A3, B4, A4, A4R, B5, B5R, A5R, Custom Size: 139.7 mm x 182 mm to 304.8 mm x 457.2 mm

### Supported media weights

Cassettes 1/2:  
52 to 220 gsm

Multi-purpose tray:  
52 to 300 gsm

Duplex:  
52 to 220 gsm

Cassette Feeding Unit-API:  
52 to 220 gsm

### Warm-up Time

From Power On: 34 Seconds or Less<sup>3</sup>  
From Sleep Mode: 10 Seconds or Less  
Quick Start-up Mode: 10 seconds or less<sup>3</sup>

### Dimensions (W x D x H)

Platen model: 565 mm x 707 mm x 777 mm  
RADF model: 565 mm x 736 mm x 890 mm  
DADF model: 565 mm x 742 mm x 900 mm

### Installation Space (W x D)

978 mm x 1,088 mm  
(Basic: Platen cover + Multi-purpose tray extension extended)  
978 mm x 1,117 mm  
(Basic: RADF + Multi-purpose tray extension extended)  
978 mm x 1,123 mm  
(Basic: DADF + Multi-purpose tray extension extended)  
1,620 mm x 1,088 mm  
(Fully configured: Platen cover + BOOKLET FINISHER-AA1 + Multi-purpose tray extension extended)  
1,620 mm x 1,117 mm  
(Fully configured: RADF + BOOKLET FINISHER-AA1 + Multi-purpose tray extension extended)  
1,620 mm x 1,123 mm  
(Fully configured: DADF + BOOKLET FINISHER-AA1 + Multi-purpose tray extension extended)

### Weight

Platen model: Approx. 69.9 kg including toner  
RADF model: Approx. 76.2 kg including toner  
DADF model: Approx. 81.5 kg including toner

## Print Specifications

### Printing method

Colour Laser Beam Printing

### Print Speed

**iR-ADV C3520i:**  
20 ppm (A4), 15 ppm (A3), 20 ppm (A4R), 20 ppm (A5R)  
**iR-ADV C3525i:**  
25 ppm (A4), 15 ppm (A3), 20 ppm (A4R), 25 ppm (A5R)  
**iR-ADV C3530i:**  
30 ppm (A4), 15 ppm (A3), 20 ppm (A4R), 30 ppm (A5R)

### Print Resolution

600dpi x 600dpi, 1200dpi x 1200dpi

### Page description languages

UFR II, PCL 6, Genuine Adobe PostScript Level 3 (Standard)

### Double Sided Printing

Automatic (Standard)

### Direct Print

Direct printing available from USB memory key, Advanced space, Remote UI and Web Access 4  
Supported file types: TIFF, JPEG, PDF, EPS, and XPS.

### Printing from mobile and cloud

A range of software and MEAP-based solutions is available to provide printing from mobile devices or internet-connected devices and cloud-based services depending on your requirements.  
Please contact your sales representative for further information

PCL fonts: 93 Roman, 10 Bitmap fonts, 2 OCR fonts, Andale Mono WT J/K/S/T\* (Japanese, Korean, Simplified and Traditional Chinese), Barcode fonts\*\*  
PS fonts: 136 Roman

\*Requires optional PCL INTERNATIONAL FONT SET-A1  
\*\*Requires optional BARCODE PRINTING KIT-D1

### Operating System

UFR II: Windows Vista/Server 2008/7/Server 2008 R2/8/Server 2012/8.1/Server 2012 R2/10/Server 2016, MAC OS X (10.7 or later)  
PCL: Windows Vista/Server 2008/7/Server 2008 R2/8/Server 2012/8.1/Server 2012 R2/10/Server 2016  
PS: Windows Vista/Server 2008/7/Server 2008 R2/8/Server 2012/8.1/Server 2012 R2/10/Server 2016, MAC OS X (10.7 or later)  
PPD: MAC OS 9.1 or later, MAC OS X (10.3.9 or later), Windows Vista/7/8.1/10

SAP Device Types are available via the SAP Market Place.  
Please refer to <http://www.canon-europe.com/support/business-product-support> for availability of print solutions for other operating systems and environments including AS/400, UNIX, Linux and Citrix.  
Some of these solutions are chargeable.

## Copy Specifications

### Copy Speed

**iR-ADV C3520i:**  
20 ppm (A4), 15 ppm (A3), 20 ppm (A4R), 20 ppm (A5R)  
**iR-ADV C3525i:**  
25 ppm (A4), 15 ppm (A3), 20 ppm (A4R), 25 ppm (A5R)  
**iR-ADV C3530i:**  
30 ppm (A4), 15 ppm (A3), 20 ppm (A4R), 30 ppm (A5R)

Approx. 5.9/8.2 seconds or less

### First-Copy-Out Time

### Copy resolution

Reading: 600 dpi x 600 dpi  
Printing: Up to 2,400dpi equivalent x 600dpi

### Multiple Copies

Up to 999 copies

### Magnification

25% - 400% (1% Increments)

### Preset Reductions

25%, 50%, 71%, 100%

### Preset Enlargements

141%, 200%, 400%

## Scan Specifications

### Standard type

Standard: Reader  
Optional: Colour Platen or Duplexing Automatic document feeder (RADF)  
or Single-pass Duplexing Automatic Document Feeder (DADF)

### Pull Scan Spec

Colour Network ScanGear2. For both TWAIN and WIA  
Supported OS: Windows Vista/7/8/8.1/10  
Server 2008/Server 2008 R2/Server 2012/Server 2012 R2

### Scan Resolution

100 x 100 dpi, 150 x 150 dpi, 200 x 100 dpi, 200 x 200 dpi, 200 x 400 dpi, 300 x 300 dpi, 400 x 400 dpi, 600 x 600 dpi

### Acceptable Originals

Platen media size: Sheet, Book, 3-Dimensional Objects (Up to 2kg)  
Platen: A3, B4, A4, A4R, B5, B5R, A5, A5R, B6R  
Document Feeder media size:  
RADF model: A3, B4, A4, A4R, B5, B5R, A5, A5R, B6  
DADF model: A3, B4, A4, A4R, B5, B5R, A5, A5R, B6R  
Document Feeder media weight:  
RADF model:  
1-sided scanning: 38 to 128 gsm/64 to 128 gsm (BW/CL)  
2-sided scanning: 50 to 128 gsm/64 to 128 gsm (BW/CL)  
DADF model:  
1-sided scanning: 38 to 157 gsm/64 to 157 gsm (BW/CL)  
2-sided scanning: 50 to 157 gsm/64 to 157 gsm (BW/CL)

Send functionality available on all models

### Scan Method

Scan to USB Memory Key: Available on all models

Scan to Mobiles or internet-connected devices:

A range of solutions is available to provide scanning to mobile devices or internet-connected devices depending on your requirements. Please contact your sales representative for further information

Scan to cloud-based services: A range of solutions is available to provide scanning to cloud-based services depending on your requirements. Please contact your sales representative for further information.

TWAIN/WIA Pull scanning available on all models

### Scan Speed (BW/CL; A4)

RADF model:  
Single-sided Scanning (BW): 70 ipm (300pi) / 51 ipm (600 dpi)  
Single-sided Scanning (Colour): 70 ipm (300pi) / 51 ipm (600 dpi)  
Double-sided Scanning (BW): 35 ipm (300pi) / 25.5 ipm (600 dpi)  
Double-sided Scanning (Colour): 35 ipm (300pi) / 25.5 ipm (600 dpi)  
DADF model:  
Single-sided Scanning (BW): 80 ipm (300pi) / 51 ipm (600 dpi)  
Single-sided Scanning (Colour): 80 ipm (300pi) / 51 ipm (600 dpi)  
Double-sided Scanning (BW): 160 ipm (300pi) / 51 ipm (600 dpi)  
Double-sided Scanning (Colour): 160 ipm (300pi) / 51 ipm (600 dpi)

### Paper Capacity

RADF model: 100 Sheets (80 gsm)  
DADF model: 150 Sheets (80 gsm)

### Double sided scanning

2-sided to 2-sided (Automatic)

# Technical Specifications

# imageRUNNER ADVANCE C3520i, C3525i, C3530i

## Send Specifications

### Optional / Standard

#### Destination

Standard on all models  
E-mail/Internet FAX (SMTP), SMB, FTP, WebDAV, Mail Box, Super G3 FAX(Optional), IP Fax(Optional)

#### Address Book/speed dials

LDAP (2,000)/Local (1,600)/Speed dial (200)

#### Send resolution

100 x 100 dpi, 150 x 150 dpi, 200 x 100 dpi, 200 x 200 dpi, 200 x 400 dpi, 300 x 300 dpi, 400 x 400 dpi, 600 x 600 dpi

#### Communication protocol

File: FTP, SMB v3.0, WebDAV  
E-mail/I-Fax: SMTP, POP3, I-Fax (Simple, Full)

#### File Format

Standard: TIFF, JPEG, PDF(Compact, Searchable, Apply policy, Optimize for Web, PDF A/1-b), XPS(Compact, Searchable), Office Open XML (PowerPoint, Word)

Optional: PDF(Trace&Smooth, Encrypted), PDF/XPS(Digital Signature)

## Fax Specifications

### Optional / Standard

#### Modem Speed

Optional on all models

Super G3: 33.6 kbps  
G3: 14.4 kbps

#### Compression Method

MH, MR, MMR, JBIG

#### Resolution

400 x 400 dpi, 200 x 400 dpi, 200 x 200 dpi, 200 x 100 dpi

#### Sending/Recording Size

A5\* and A5R\* to A3  
\*Sent as A4

#### FAX memory

Up to 30,000 pages

#### Speed dials

Max. 200

#### Group dials/destinations

Max. 199 dials

#### Sequential broadcast

Max. 256 addresses

#### Memory backup

Yes

## Security Specifications

### Authentication

Standard: Universal Login Manager (Device and Function Level Log-in), User Authentication, Department ID, Authentication, Access Management System

### Data

Standard: Trusted Platform Module (TPM), Hard Disk Password Lock, Hard Disk Drive Erase, Mail Box Password Protection, Hard Disk Drive Encryption(FIPS140-2 Validated), Common Criteria Certification (DIN ISO 15408)<sup>10</sup>  
Optional: Hard Disk Drive removal, Data Loss Prevention (Requires uniFLOW)

### Network

Standard: IP/Mac Address Filtering, IPSEC, TLS Encrypted Communication, SNMP V3.0, IEEE 802.1X, IPv6, SMTP Authentication, POP Authentication before SMTP, S/MIME

### Document

Standard: Secure Print, Adobe LiveCycle® Rights Management ES2.5 Integration  
Optional: Encrypted PDF, Encrypted Secure Print, User and Device signatures, Secure Watermarks, Document Scan locking

## Environmental Specifications

### Operating Environment

Temperature: 10 to 30 °C (50 to 86 °F)  
Humidity: 20 to 80 % RH (no condensation)  
220-240 V (±10 %), 50/60 Hz (±2 Hz), 4 Amp

### Power source

### Power consumption

Maximum: Approx. 1.5 kW  
Printing: iR-ADV C3520i Approx. 384.8 Wh or less<sup>5</sup>  
iR-ADV C3525i Approx. 412.5 Wh or less<sup>5</sup>  
iR-ADV C3530i Approx. 435.7 Wh or less<sup>5</sup>  
Standby: Approx. 41.2 Wh  
Sleep mode: Approx. 0.8 W<sup>6</sup>  
Plugin Off: Approx. 0.2W<sup>5</sup>  
Typical Electricity Consumption (TEC) rating<sup>7</sup>:  
0.8 kWh (iR-ADV C3520i)  
0.9 kWh (iR-ADV C3525i)  
1.2 kWh (iR-ADV C3530i)

### Noise levels

Sound Power Level (LwAd)<sup>8</sup>  
iR-ADV C3520i: Active (BW): 63.3 dB or Less<sup>5</sup>,  
Active (CL): 63.4 dB or Less<sup>5</sup>, Standby: 27 dB or Less<sup>5</sup>  
iR-ADV C3525i: Active (BW): 64 dB or Less<sup>5</sup>,  
Active (CL): 64.1 dB or Less<sup>5</sup>, Standby: 27 dB or Less<sup>5</sup>  
iR-ADV C3530i: Active (BW): 64.2 dB or Less<sup>5</sup>,  
Active (CL): 64.3 dB or Less<sup>5</sup>, Standby: 27 dB or Less<sup>5</sup>

Sound Pressure (LpAm)<sup>7</sup>  
Bystander's position:  
iR-ADV C3520i: Active (BW): 48.6 dB or Less<sup>5</sup>,  
Active (CL): 48.7 dB or Less<sup>5</sup>, Standby: 9.8 dB or less<sup>5</sup>  
iR-ADV C3525i: Active (BW): 49.3 dB or Less<sup>5</sup>,  
Active (CL): 49.4 dB or Less<sup>5</sup>, Standby: 9.9 dB or less<sup>5</sup>  
iR-ADV C3530i: Active (BW): 49.5 dB or Less<sup>5</sup>,  
Active (CL): 49.6 dB or less<sup>5</sup>, Standby: 9.6 dB or Less<sup>5</sup>

### Standards

ENERGY STAR® Qualified  
Ecomark  
Blue Angel

## Consumables

### Toner Cartridge/s

C-EXV 49 TONER BK/C/M/Y

### Toner (Estimated Yield @5% Coverage)

C-EXV 49 TONER BK: 36,000 pages  
C-EXV 49 TONER C/M/Y: 19,000 pages

## Hardware Accessories

For full information on options available for the iR-ADV C3500 series, please refer to the specification tables on your local Canon web site.

## Footnotes

- <sup>[1]</sup> BOOKLET FINISHER-AA1 only
- <sup>[2]</sup> With INNER 2/4 HOLE PUNCHER-A1 or INNER 4 HOLE PUNCHER-A1
- <sup>[3]</sup> Time between device power-on and when the start key is enabled
- <sup>[4]</sup> Only PDF print from websites is supported
- <sup>[5]</sup> Data taken from Blue Angel Certification User Notes
- <sup>[6]</sup> 0.8W sleep mode is not available in all circumstances due to certain settings.
- <sup>[7]</sup> Typical Electricity Consumption (TEC) rating represents the typical electricity consumed by a product during 1 week, measured in kilowatt-hours (kWh). The test methodology is defined by Energy Star (<http://www.eu-energystar.org>).
- <sup>[8]</sup> Declared noise emission in accordance with ISO 7779
- <sup>[9]</sup> Data taken from ECO declaration
- <sup>[10]</sup> Common Criteria Certification (DIN ISO 15408) - Testing is scheduled to be finalised by the end of October 2017
- <sup>[11]</sup> Inner Shift Sorter - Will be available by June 2017

## Software and Solutions



## Certifications and compatibility



Canon Inc.  
canon.com  
Canon Europe  
canon-europe.com  
English edition  
© Canon Europa N.V., 2017

Canon (UK) Ltd  
Woodhatch  
Reigate  
Surrey RH2 8BF  
Telephone no 01737 220000  
Facsimile 01737 220022  
canon.co.uk

Canon Ireland  
3006 Lake Drive  
Citywest, Saggart  
Co.Dublin, Ireland  
Telephone No: 01 2052400  
Facsimile No: 01 2052525  
canon.ie

